



Introducing Intelcom iKnow 2.5— Data Integration Process Visibility & Automation

Product Overview

The iKnow application offers functionality for operating IBM's InfoSphere DataStage ETL platform. Tightly integrated with DataStage, iKnow Server provides process automation, monitoring and analysis features. iKnow's modules address different aspects of data integration process automation and work together to enable trusted information in complex data integration environments.

Process Visibility

Process automation, a strong feature of iKnow, is among the most important data centre responsibili-

ties. In many organizations job schedulers handle thousands or even tens of thousands of individual jobs every day, each potentially mission critical for the business. Automating job and process execution is vital for IT, and the business as a whole, to be able to deliver on expectations.

Analytics

iKnow offers powerful new tools for operators who wish to understand and improve their DataStage environments. The Analytics module provides insight into how the system was performing, across servers, when events of particular interest, such as errors or heavy server load, occurred. With iKnow Analytics

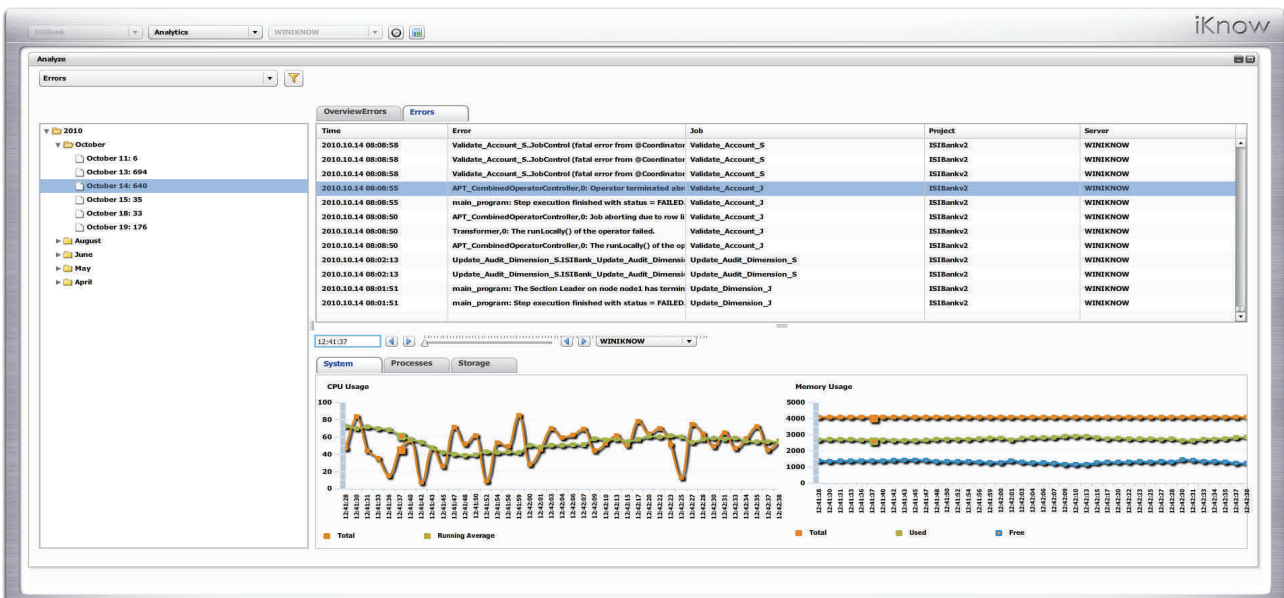


Figure 1: The Analytics Module



users can replay past events, such as last night's batch process, and examine the interplay between system resources and parallel processes executing on multiple servers.

Monitoring

In an operational environment with complex data integration processes up-to-date information on task progress and system performance must be constantly available to operators. A custom-

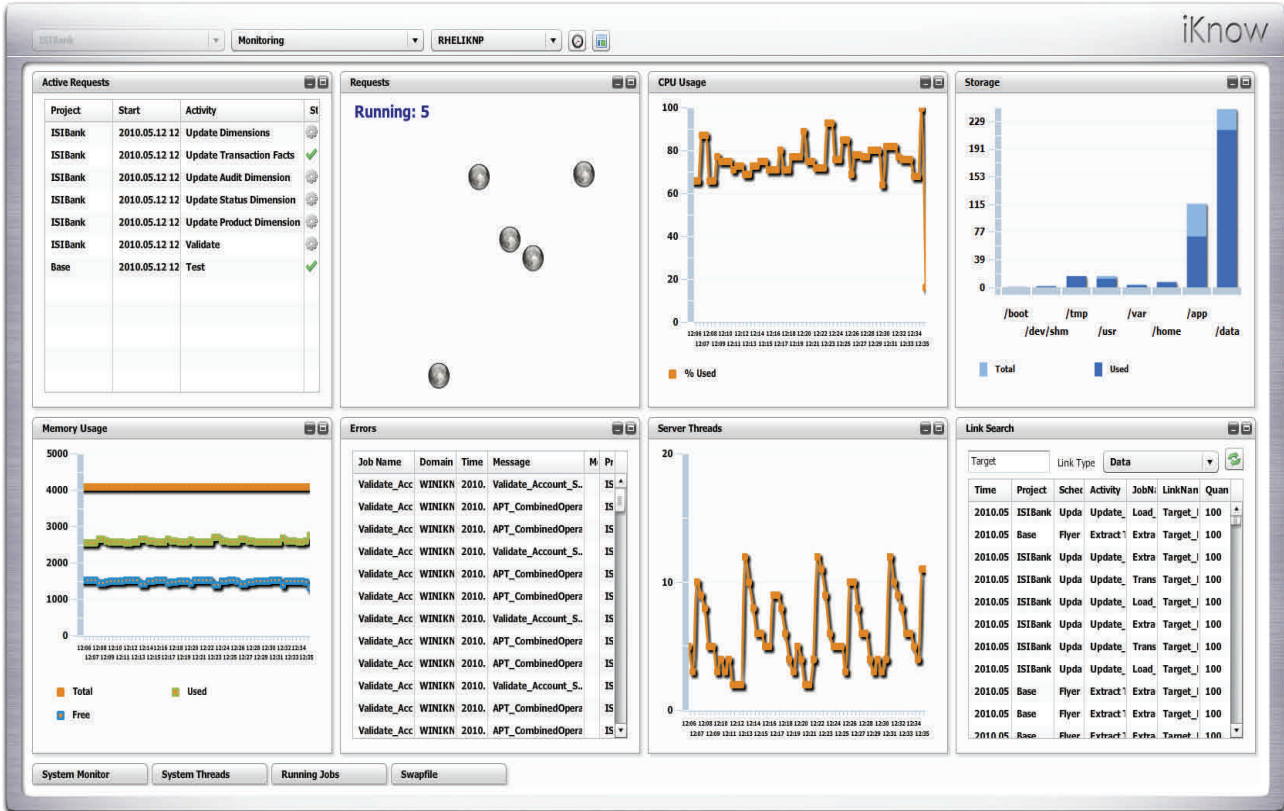
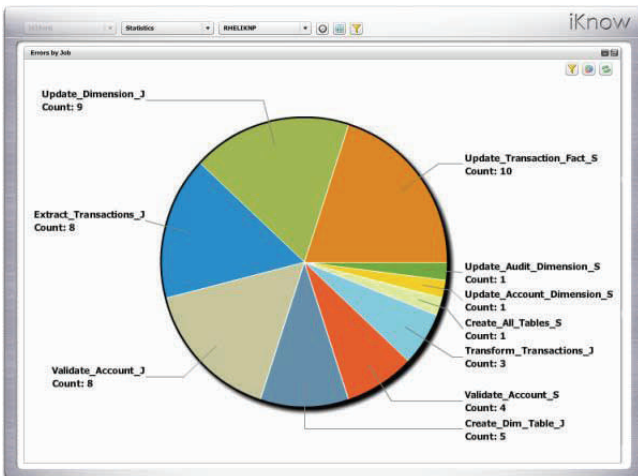


Figure 2: The Monitoring Module

izable dashboard is the ideal format for displaying lots of information in an easy-to-grasp view. The monitoring dashboard in iKnow collects information on running processes and activities, DataStage errors and link data and server performance metrics. iKnow support multiple DataStage engines on multiple servers. Supporting hardware, such as database servers, can also be monitored.



Statistics

To be able to improve and optimize data integration processes over time, operators need access to job performance statistics. Operational metadata on process and activity duration and errors is automatically collected by iKnow, and made available in the Statistics dashboard.

Process Automation

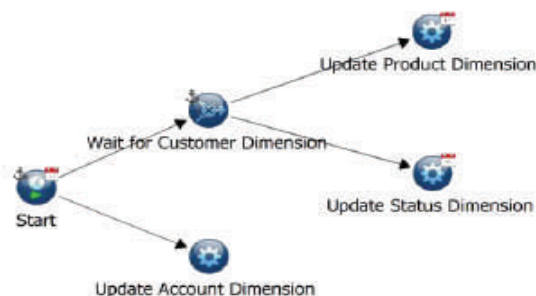
Process automation, a strong feature of iKnow, is among the most important data centre responsibilities. In many organizations job schedulers handle thousands or even tens of thousands of individual jobs every day, each potentially mission critical for the business. Automating job and process execution is vital for IT, and the business as a whole, to be able to deliver on expectations

Process management features

The Process Management module in iKnow provides all the building blocks required for flexible process design. In essence, iKnow processes define which activities to execute and when to do so. Jobs from multiple DataStage servers and command based tasks can be executed within one iKnow process.

Triggers

Triggers define when processes start. Processes can be triggered by 3rd party enterprise schedulers through iKnow API or the iKnow Tools command line interface, or using iKnow's



Picture 1 Process flow diagram

comprehensive built-in calendar based and file based trigger options.

Dependencies

A dependency is an instruction to iKnow Server to hold back execution of a particular activity until another process or activity has finished. The graphical layout within a process diagram implicitly defines dependencies between the activities within that process diagram. In addition iKnow provides an explicit dependency

Process management, fast facts

- Manages DataStage processes across servers
- Flexible calendars, constraints and dependencies
- Workload management
- Integrates with Enterprise Schedulers
- Process visibility with drill-down to DataStage stage level and data volumes
- Error and event notifications



mechanism to establish dependencies between different processes and between activities in different process diagrams, even on different servers. Dependencies can check for finished tasks in the past, and be overridden if a timeout is reached.

System metric (CPU, memory and disk I/O) based dependencies provide iKnow users with a new level of flexibility in making their operating environment perform smoothly

Constraints

Constraints can be used to prevent tasks from executing. Constraints can be applied to entire processes, to individual process activities or to branches of a process diagram

Customer Calendars

Custom calendars allow users to define reusable calendars that mark days of a particular importance to the business. Custom calendars can be used for constraints as well as process triggers. A special kind of custom calendar, the Exclude Dates calendar, prevents processes from executing on chosen days within the current iKnow project.

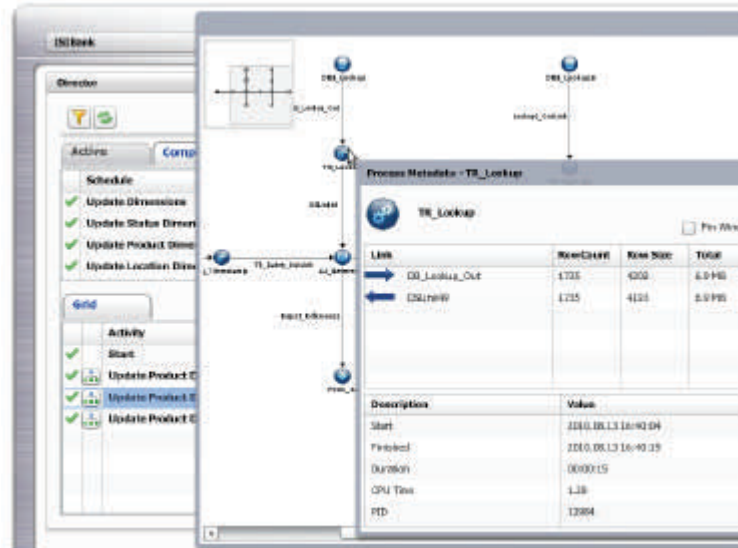
Workload management

To prevent resource overload, iKnow offers workload management functions that restrict the number of concurrent activities executing on a server.

Process Director

iKnow Director provides tools for monitoring currently executing processes in graphical mode and reviewing past invocations. Director offers process metadata down to the stage and link level of DataStage. Operators can use Director to restart processes that have failed or cancel waiting processes.

Through iKnow Director operators also gain access to DataStage job invocation logs, currently executing jobs, job statistics and design.

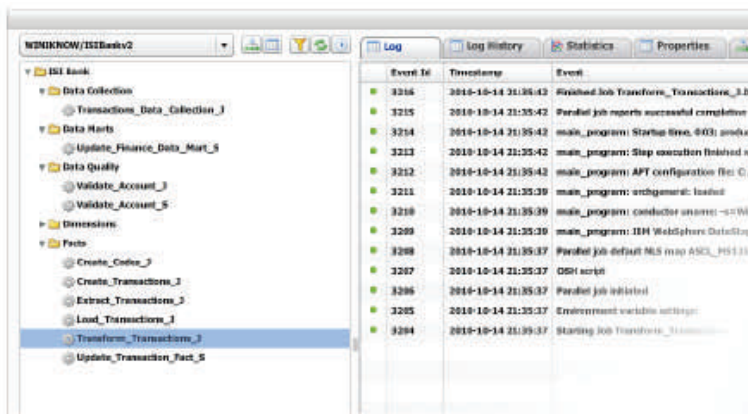


Picture 3 Process Director with DataStage metadata

Recovery

Users can choose between automatic or manual process recovery at system restart. When errors occur during process execution,

multiple options for manual re-start are provided: re-start process at point of failure, re-start individual activities or re-start from previous activity.



Picture 2 Director view for DataStage

Notifications

Users can define notification mechanisms for responding to errors and other events. Supported alert events include process or activity failure, process or activity completion, system resource events such as heavy server load or low disk space, and iKnow Server shutdown events. Notifications are sent through email to designated iKnow operators.

For more information

To learn more about Intelcom iKnow 2.5 , join our iKnow Webinar on the 8th March. To join the Webinar please register at;
www.dotgroup.co.uk/iknow/register.

Alternatively please contact DOT Group at
info@dotgroup.co.uk, Tel: 0207 352 8423, or www.iknow.no

iKnow Webinar: www.dotgroup.co.uk/iknow/register to register your interest

